

Plat Notes:  
Scale: 1" = 100'

Heavy lines indicate plat limits.

All streets, alleys, and easements within plat limits are herein dedicated unless noted otherwise.

No building permit shall be issued on any survey certificate that is not in accordance with an approved final plat unless exception is provided by the Planning and Zoning Commission policy or by the Lubbock Code of Ordinances.

All utility service shall be in accordance with the Underground Utilities Policy Statement by the Planning and Zoning Commission of the City of Lubbock, Texas and the provisions of section 36.09.095 of the Lubbock Code of Ordinances.

Any relocation or revision of existing facilities shall be at the subdivider's expense. Compensation shall be made prior to the recording of this final plat.

All existing or proposed utility services to and on tracts indicated by this plat shall be contained in the public right-of-way and public or private utility easements. Utility service installation requested at a future date and not within an easement indicated by this plat, shall be within a proper utility easement granted by the owner of said property by separate recorded instrument prior to the provision of such service. Such easements shall be at the expense of the entity requesting such installation.

All easements herein granted shall entitle the city or the utility company using such easements to the right to remove, repair or replace any lines, pipes, conduits, or poles within such easements as may be determined by the city or utility company without the city or utility company being responsible or liable for the replacement of improvements, paving, or surfacing of the easement necessitated by such repair, removal, or replacement. Easements designated or intended for vehicular passage (utility and emergency) or pedestrian access shall not be fenced or otherwise obstructed.

Any easements or rights-of-way shown as 'to be dedicated by separate instrument' are shown on the plat for information purposes only. This plat does not dedicate said easements.

Minimum floor elevations shall conform to the requirements of the Lubbock Drainage Criteria Manual, as adopted by Ord. 10022, as amended, and Section 28.09.131, Section 28.14.004, and Section 30.03.073 of the Lubbock Code of Ordinances.

The survey information shown hereon was prepared from the result of an on the ground survey of the property shown hereon, and has been completed substantially in compliance with the Professional and Technical Standards promulgated by the Texas Board of Professional Land Surveying Practices Act, Section 663.13.

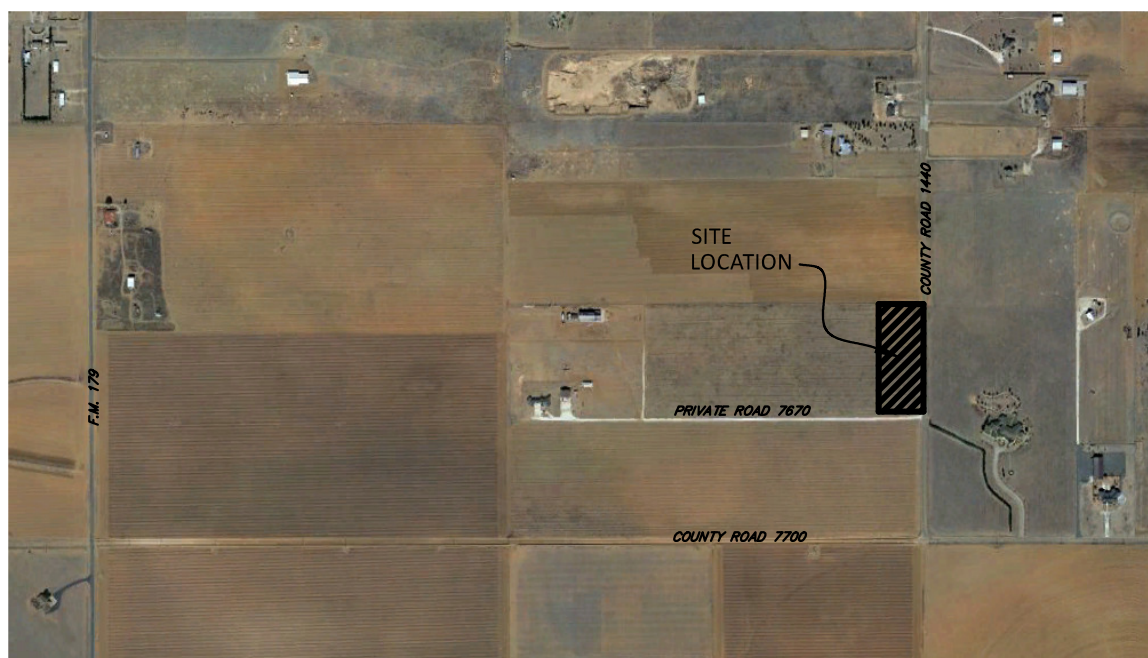
General Notes:

- Record documents other than those shown may affect this tract.
- Only those copies which bear an original ink impression seal and signature will be considered a "valid" copy. Delta Land Surveying LLC will not be responsible for anything other than a valid copy of this survey.
- Controlling Monuments are those that were held for the purpose of this survey or agree with this survey.
- Physical monuments of record dignity are those that are expressly called for in the records and can be identified with a reasonable amount of certainty. They are also controlling monuments unless otherwise noted.
- Monuments indicated as found on this survey are not "physical monuments of record dignity" unless otherwise noted.
- Found monuments are accepted by this surveyor as controlling evidence due to substantial agreement with record documents unless otherwise noted.
- Notes and statements shown on this survey in italics were provided and or required by sources other than the signing surveyor. The signing surveyor makes no guarantee to the accuracy, legality, or validity of such statements.
- The signing surveyor's certification only applies to those things which are part of the normal purview of a Registered Professional Land Surveyor in the State of Texas.

Survey Specific Notes:

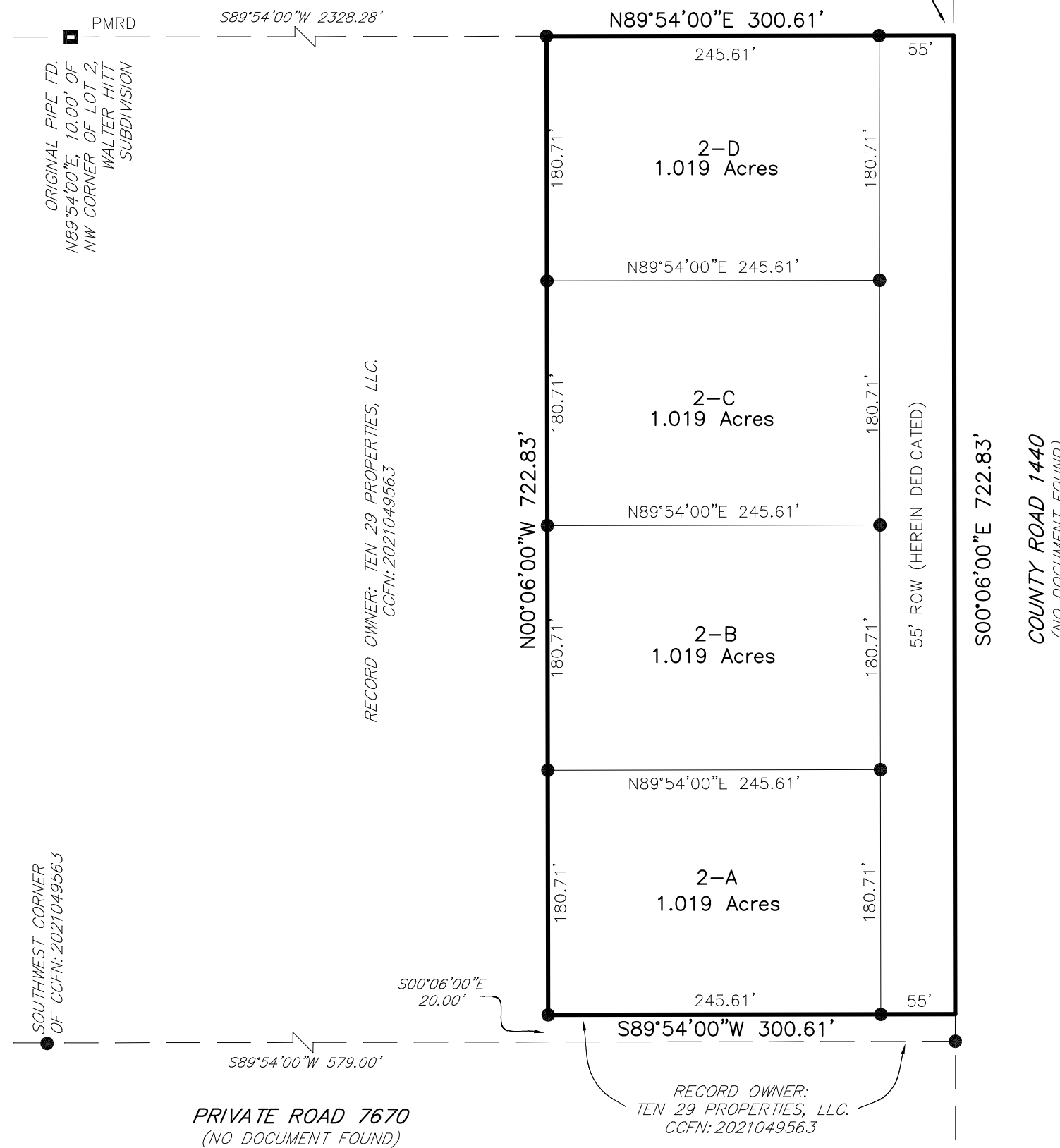
- Bearings are based on the East line of Section 59 being previously recognized as S00°06'00"W.
- Distances are actual surface distances.
- Field notes prepared on separate document bearing the same date.
- Coordinates shown are based on the State Plane Coordinate System of 1983, (TX-North Central Zone). Coordinates are actual grid coordinates and are generated by RTK Observation using the Leica Smartnet Network.
- Lots 2-A through 2-D contain 4.988 acres (217,289.9 sq. ft.) within the plat limits.

VICINITY MAP (NOT TO SCALE)



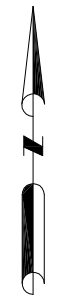
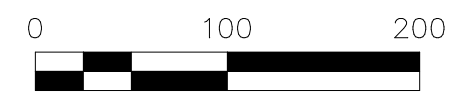
RECORD OWNER:  
JOHN GATLIN LIVING TRUST  
CCFN: 2011040949

P.O.B.  
THIS IS THE ORIGINAL  
NORTHEAST CORNER OF  
LOT 2, WALTER HITT  
SUBDIVISION



# LOTS 2-A THROUGH 2-D , A REPLAT OF A PORTION OF LOT 2, WALTER HITT SUBDIVISION, being out of Section 59, Block 20, Lubbock County, Texas

- SET 1/2" IRON ROD WITH BLUE CAP  
MARKED DELTA LAND SURVEYING
- ⊙ FD. 1/2" IRON ROD WITH YELLOW CAP  
MARKED HRA
- FD. 1" IRON PIPE
- P.O.B. POINT OF BEGINNING
- CCFN COUNTY CLERK FILE NUMBER
- CM CONTROLLING MONUMENT
- PMRD PHYSICAL MONUMENT OF RECORD DIGNITY



Approved this \_\_\_\_\_ day of \_\_\_\_\_, 20\_\_\_\_, by  
the Commissioners Court of the County of Lubbock, Texas.

Approved \_\_\_\_\_ County Judge

Attest \_\_\_\_\_ County Clerk


Approved this \_\_\_\_\_ day of \_\_\_\_\_, 20\_\_\_\_, by  
the City Planning and Zoning Commission of the City of Lubbock, Texas.

Approved \_\_\_\_\_ Chairman

Attest \_\_\_\_\_ Secretary

KNOW ALL MEN BY THESE PRESENTS: That I, Timothy R. Barry, do hereby certify that I prepared this plat from an actual and accurate survey of the land and that the corner monuments and/or other control shown hereon were properly placed under my personal supervision, in accordance with the Subdivision Regulations of the City of Lubbock, Texas.

Timothy R. Barry  
Registered Professional Land Surveyor No. 6823  
Survey Date: December 22, 2022  
Delta Land Surveying Project No. 21833



DELTA LAND SURVEYING, LLC  
FIRM # 10194496  
DELTA ENGINEERING, LLC  
FIRM # F-22948  
1310 JARVIS STREET  
LUBBOCK, TX 79403  
806-701-5707  
WWW.DELTALBK.COM

DRAFTED BY: RS REV. BY: JN