




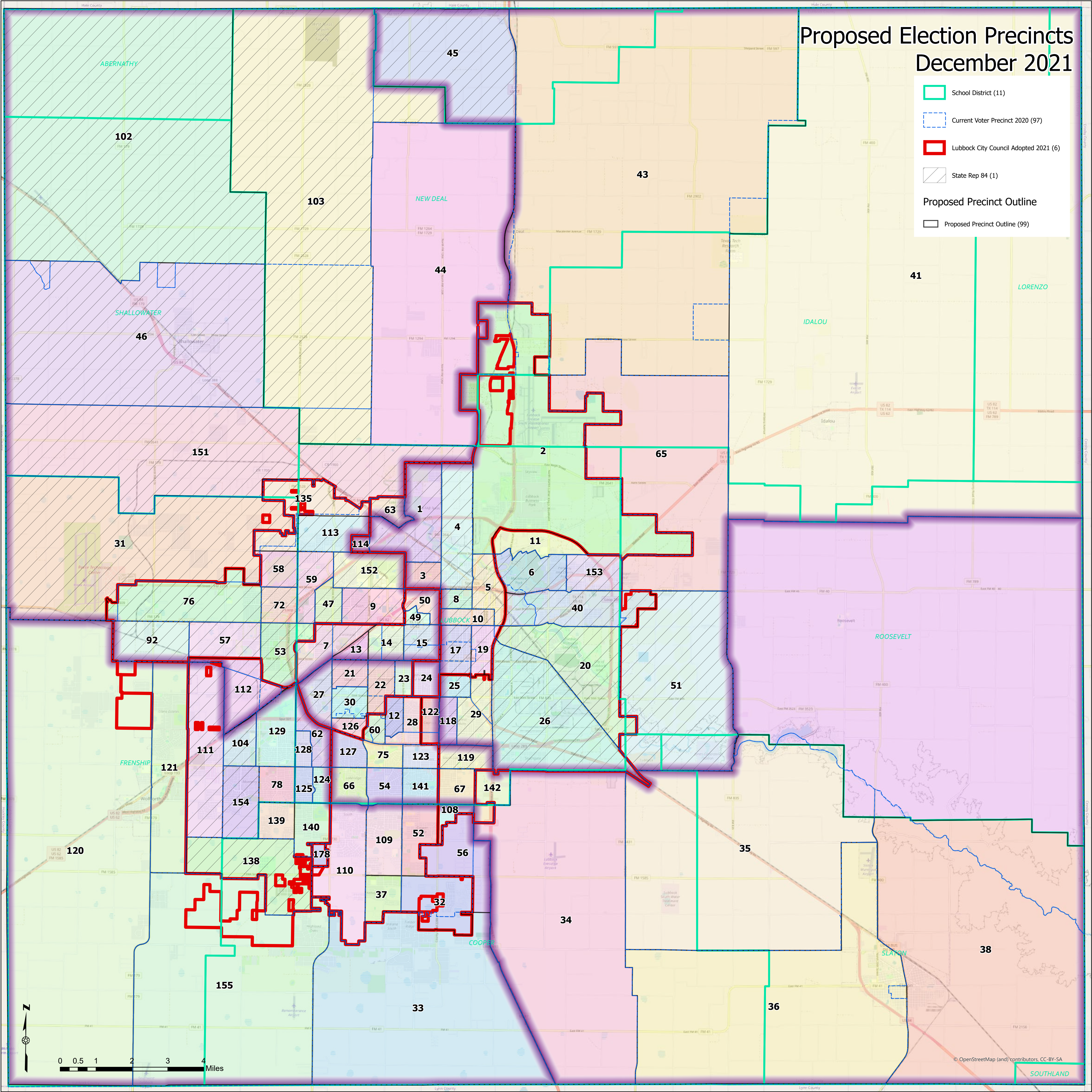


Proposed Election Precincts December 2021

-  School District (11)
-  Current Voter Precinct 2020 (97)
-  Lubbock City Council Adopted 2021 (6)
-  State Rep 84 (1)
- Proposed Precinct Outline**
 -  Proposed Precinct Outline (99)



0 0.5 1 2 3 4 Miles



Supplemental Map 2

Precinct 32

56

Due to software limitations, the census blocks were unable to be split for drawing of the voter precincts. The initial drawing of the election precincts was unable to include areas annexed by the City of Lubbock after the census blocks were drawn when the area annexed was not a whole census block.

Therefore the following correction is necessary:

New precinct 32 expands south to take in part of Precinct 33, which is South of CR 7500 (146th St), between CR 2300, and CR 2140, following the City of Lubbock city boundary.

32

COOPER

33

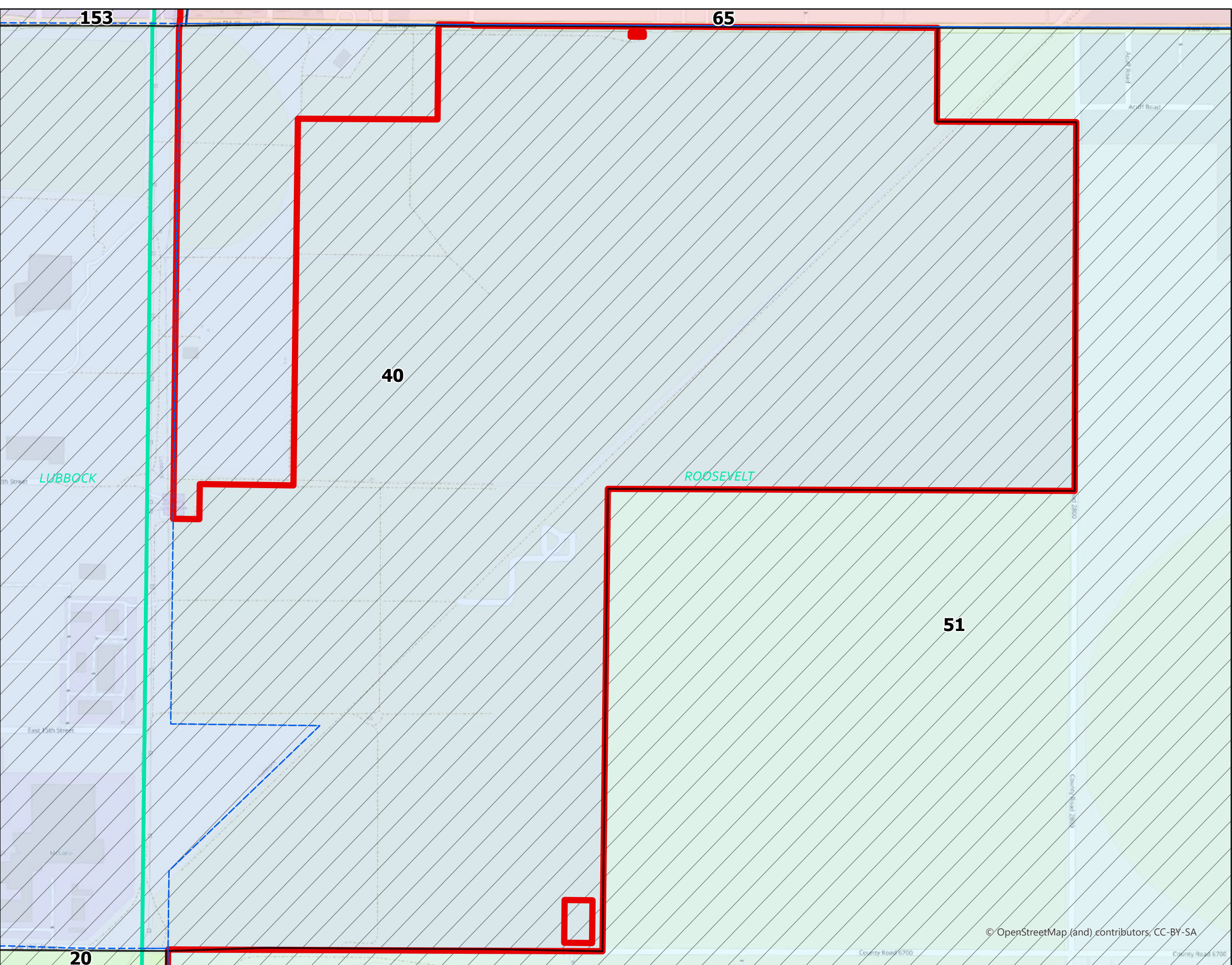
Supplemental Map 3

Precinct 40

Due to software limitations, the census blocks were unable to be split for drawing of the voter precincts. The initial drawing of the election precincts was unable to include areas annexed by the City of Lubbock after the census blocks were drawn when the area annexed was not a whole census block.

Therefore the following correction is necessary:

Precinct 40 expands to take in part of Precinct 51, which is east of Olive Ave, and south of 4th St, following the City of Lubbock Boundary. Unincorporated territory inside of the annexed area will be handled as a sub-precinct in Precinct 40.



Supplemental Map 4

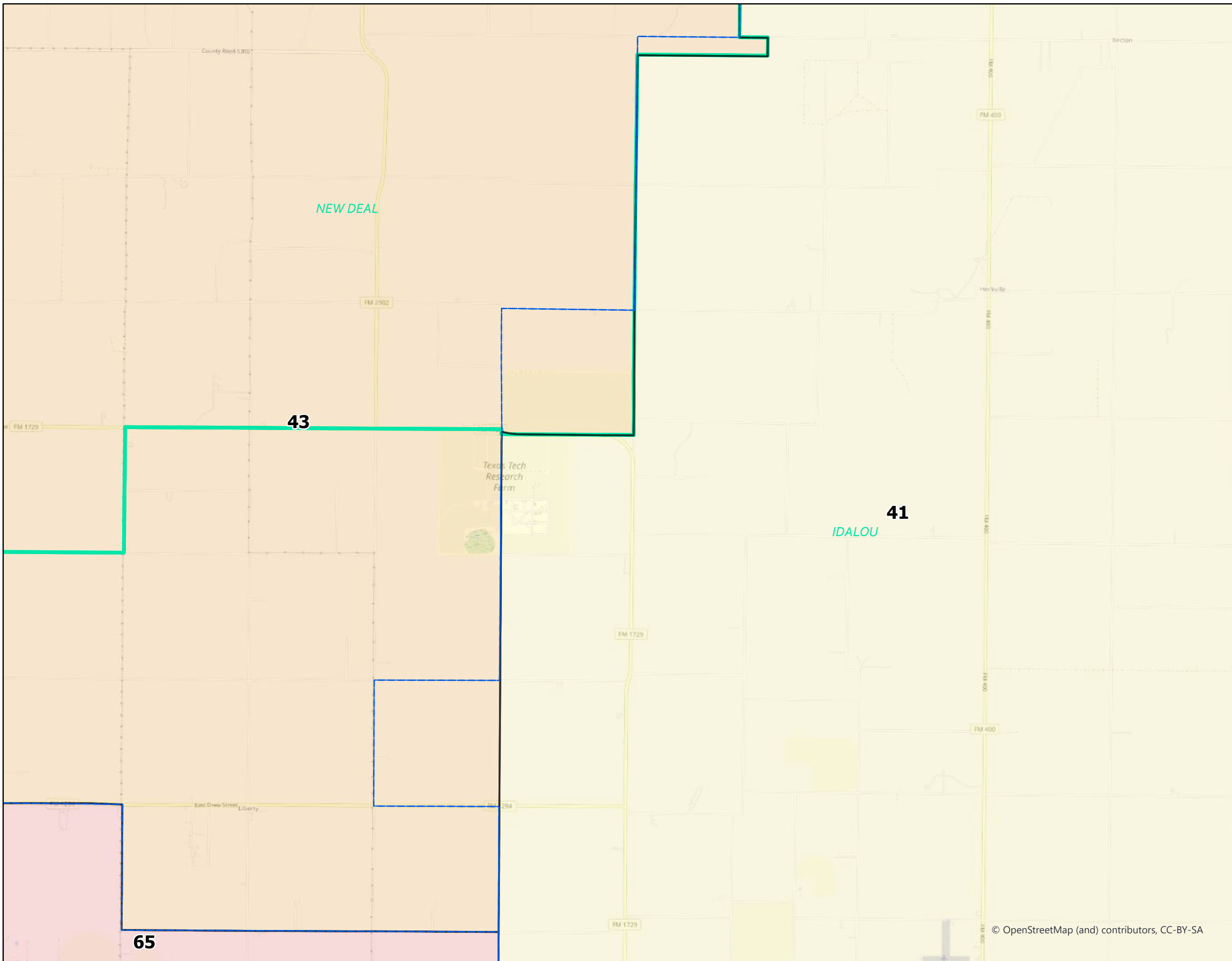
Precinct 43

Expansion to Proposed Change #2.
Extending the boundary between Precinct 41 and Precinct 43 South of FM 1729 to CR 6000 continuous along CR 3000.

A previously discussed and approved change did not make it into the initial proposed voter precinct drawing

The following change is submitted:

Precinct 43 expands to take in part of Precinct 41, which is south of CR 5800 and north of CR 5900, and between CR 2900 and CR 3000.



Supplemental Map 1

Precinct 76

Due to software limitations, the census blocks were unable to be split for drawing of the voter precincts. The initial drawing of the election precincts was unable to include areas annexed by the City of Lubbock after the census blocks were drawn when the area annexed was not a whole census block.

Therefore the following correction is necessary:

Precinct 76 expands to take in part of Precinct 31, which is north of 4th street, and south of Auburn St, between Quincy Ave, and Upland Ave.

