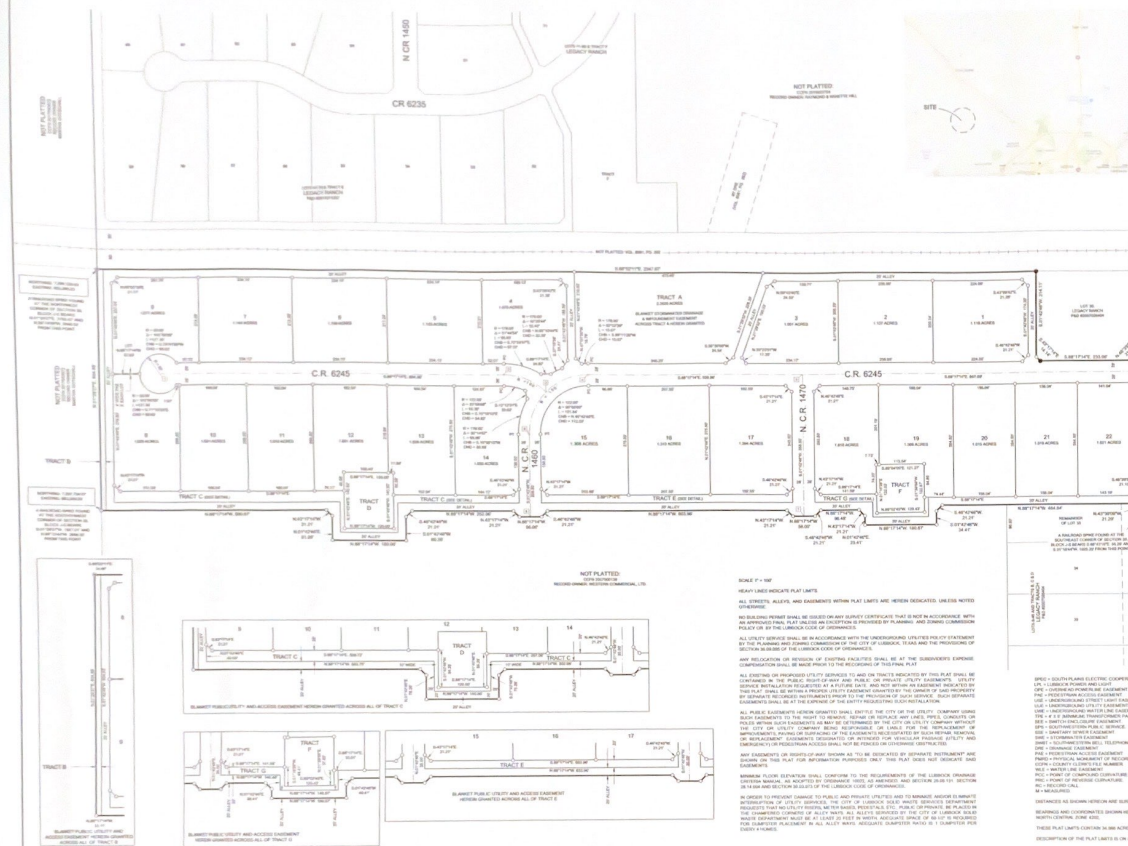


TRACTS A THROUGH G & LOTS 1 THROUGH 22  
LEGACY RANCH SOUTH  
A SUBDIVISION IN SECTION 30, BLOCK J-5,  
LUBBOCK COUNTY, TEXAS

BEING UNPLATTED LAND IN THE EAST HALF OF SECTION 30, BLOCK J-5 &  
A RE-PLAT OF ALL OF LOTS 31 AND 32 AND A PORTION OF LOT 33, LEGACY RANCH  
PLAT OF LEGACY RANCH, PLAT AND DESIGNATION NUMBER 20100808,  
OFFICIAL PUBLIC RECORDS OF LUBBOCK COUNTY, TEXAS  
PLAT OF LEGACY RANCH, PLAT AND DESIGNATION NUMBER 20100808,  
OFFICIAL PUBLIC RECORDS OF LUBBOCK COUNTY, TEXAS



TRACT	ACREAGE	OWNER	DATE
TRACT A	1.1000	LEGACY RANCH	10/1/2010
TRACT B	1.1000	LEGACY RANCH	10/1/2010
TRACT C	1.1000	LEGACY RANCH	10/1/2010
TRACT D	1.1000	LEGACY RANCH	10/1/2010
TRACT E	1.1000	LEGACY RANCH	10/1/2010
TRACT F	1.1000	LEGACY RANCH	10/1/2010
TRACT G	1.1000	LEGACY RANCH	10/1/2010
LOT 1	1.1000	LEGACY RANCH	10/1/2010
LOT 2	1.1000	LEGACY RANCH	10/1/2010
LOT 3	1.1000	LEGACY RANCH	10/1/2010
LOT 4	1.1000	LEGACY RANCH	10/1/2010
LOT 5	1.1000	LEGACY RANCH	10/1/2010
LOT 6	1.1000	LEGACY RANCH	10/1/2010
LOT 7	1.1000	LEGACY RANCH	10/1/2010
LOT 8	1.1000	LEGACY RANCH	10/1/2010
LOT 9	1.1000	LEGACY RANCH	10/1/2010
LOT 10	1.1000	LEGACY RANCH	10/1/2010
LOT 11	1.1000	LEGACY RANCH	10/1/2010
LOT 12	1.1000	LEGACY RANCH	10/1/2010
LOT 13	1.1000	LEGACY RANCH	10/1/2010
LOT 14	1.1000	LEGACY RANCH	10/1/2010
LOT 15	1.1000	LEGACY RANCH	10/1/2010
LOT 16	1.1000	LEGACY RANCH	10/1/2010
LOT 17	1.1000	LEGACY RANCH	10/1/2010
LOT 18	1.1000	LEGACY RANCH	10/1/2010
LOT 19	1.1000	LEGACY RANCH	10/1/2010
LOT 20	1.1000	LEGACY RANCH	10/1/2010
LOT 21	1.1000	LEGACY RANCH	10/1/2010
LOT 22	1.1000	LEGACY RANCH	10/1/2010

1. PLANNED LOT WITH LOT 31 & 32 (SHOWN)  
2. PLANNED LOT WITH LOT 31 & 32 (SHOWN)  
3. LOT 31 & 32 (SHOWN)

APPROVED BY LUBBOCK COUNTY

APPROVED BY LUBBOCK COUNTY

APPROVED BY LUBBOCK COUNTY

APPROVED BY LUBBOCK COUNTY

APPROVED BY LUBBOCK COUNTY

APPROVED BY LUBBOCK COUNTY

APPROVED BY LUBBOCK COUNTY

APPROVED BY LUBBOCK COUNTY

APPROVED BY LUBBOCK COUNTY

APPROVED BY LUBBOCK COUNTY

APPROVED BY LUBBOCK COUNTY

APPROVED BY LUBBOCK COUNTY

APPROVED BY LUBBOCK COUNTY

APPROVED BY LUBBOCK COUNTY

APPROVED BY LUBBOCK COUNTY

APPROVED BY LUBBOCK COUNTY

APPROVED BY LUBBOCK COUNTY

APPROVED BY LUBBOCK COUNTY

APPROVED BY LUBBOCK COUNTY

APPROVED BY LUBBOCK COUNTY

APPROVED BY LUBBOCK COUNTY

APPROVED BY LUBBOCK COUNTY

APPROVED BY LUBBOCK COUNTY

APPROVED BY LUBBOCK COUNTY

APPROVED BY LUBBOCK COUNTY

**LUBBOCK COUNTY, TEXAS**  
BEING UNPLATTED LAND IN THE EAST HALF OF SECTION 30, BLOCK J-5 &  
A REPLAT OF ALL OF LOTS 31 AND 32 AND A PORTION OF LOT 33, LEGACY RANCH  
PARENT DEED UNPLATTED LAND, COUNTY CLERK'S FILE NUMBER 2007000130.  
OFFICIAL PUBLIC RECORDS OF LUBBOCK COUNTY, TEXAS  
PLAT OF LEGACY RANCH PLAT AND DEDICATION NUMBER 2007028404.  
OFFICIAL PUBLIC RECORDS OF LUBBOCK COUNTY, TEXAS

[illegible]

● = FOUND 1/2" BIRM ROD WITH CAP "SMITH APLE 3366" (PWRD)  
 ○ = FOUND "X" CUT ON CONCRETE (CM)  
 ○ = SET 1/2" BIRM ROD WITH CAP "VIC APLE 6432" (UNLESS OTHERWISE INDICATED)

APPROVED THIS \_\_\_\_\_ DAY OF \_\_\_\_\_ 20\_\_\_\_  
BY CLERK OF COURT \_\_\_\_\_

APPROVED \_\_\_\_\_ COUNTY JUDGE \_\_\_\_\_

APPROVED THIS 14th DAY OF Oct 21

APPROVED: [Signature] CHAIRMAN

ATTEST: [Signature] DIRECTOR OF PLANNING

KNOW ALL MEN BY THESE PRESENTS,  
THAT I, DANIEL SPARTY, REGISTERED PROFESSIONAL LAND SURVEYOR  
PROFESSOR, DO HEREBY TRULY AND ACCURATELY SURVEY OF THE LAND  
AND THAT THE CURRENT MONUMENTS INDICATED THEREON WERE PROPERLY  
PLACED UNDER MY PERSONAL SUPERVISION

*Signature*

REGISTERED PROFESSIONAL LAND SURVEYOR WMAE  
LUBBOCK, TEXAS

 10-15-02

**Parkhill**

Parkhill.com

TSPELS FORM REGISTRATION NO. 100896

TYPELS FROM RECONSTRUCTION NO. 1236402